



NORTH PENN YMCA

# 2025 SUMMER CAMP



# TABLE OF CONTENTS



Welcome.....3

Why North Penn YMCA Summer Camp .....4

Collegetown Summer Camp at Skippack Elementary School .....5

Harleysville Summer Camp at Indian Valley Family YMCA..... 6

Souderton Summer Camp at E.M.C Elementary..... 7

Harleysville Pre-K Camp & K-1 Camp at Alumni Ave. Early Childhood Center .....8

Lansdale Summer Camp at Inglewood Elementary..... 9

Lansdale Summer Camp at Lansdale Area Family YMCA.....10

Lansdale Summer Camp at Lansdale Catholic..... 11

Lansdale Summer Camp at Lansdale Community Center.....12

Hatfield Summer Camp at School Road Park .....13

Towamencin Summer Camp at Fischers Park.....14

Field Trip Information .....15

Registration .....16



# WELCOME!



## REGISTRATION

Opens Jan 27  
9 AM



## WHAT TO BRING

- Packed lunch  
(camp is NUT FREE)
- Water bottle
- Proper clothes
- Swimsuit
- Towel
- Closed-toe shoes
- Medication if required/needed

No refrigeration or microwave available. Campers will be active and may get dirty. Please dress your camper appropriately. See parent handbook for details.

## CAMP COLOR REFERENCE

INDIAN VALLEY

HARLEYSVILLE

LANSDALE

North Penn YMCA has been a trusted summer camp destination for Montgomery County families for decades, offering unique and diverse experiences at each location. Each camp provides a variety of outdoor and recreational activities tailored to its site, including sports, games, swimming and enrichment education, ensuring every camper finds something they love.

With weekly themes, campers at every location enjoy new adventures, make lasting friendships, and grow in mind, body, and spirit—all while exploring the distinctive offerings that make each camp truly one of a kind!

We look forward to a summer of "Friends, Fun & Sun" with your campers!



## PARENT OPEN HOUSES

Please scan the QR Code for upcoming Open House dates.

SCAN HERE!



## FINANCIAL ASSISTANCE AVAILABLE

At the Y, strengthening community is our cause. We believe all children should have the opportunity to learn, grow and thrive. Financial assistance makes summer day camp available to those kids in need.

- All financial assistance applications must be attached to camp registration forms.
- All applicants for camp Financial Assistance must apply for ELRC benefits for child care.
- Financial Assistance applications and child care addendums may be obtained online at [NorthPennYMCA.org](http://NorthPennYMCA.org) or at one of the branches.

Summer Camp EHFA application due date:  
**MAY 16, 2025**

The application process is confidential and requires proof of financial need.

To learn more, please visit

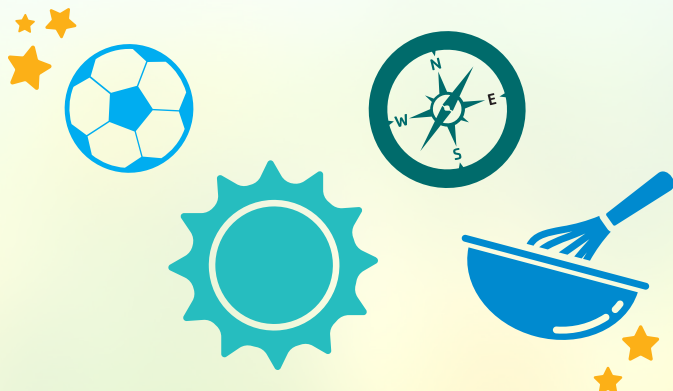
[NorthPennYMCA.org/join-our-y/financial-assistance](http://NorthPennYMCA.org/join-our-y/financial-assistance)

## FAMILY CORNER

# WHY NORTH PENN YMCA SUMMER CAMP

Campers will grow, build skills and gain self-confidence in a safe, values-based environment. What makes us the best choice for your child?

- ✓ **SAFE, ENJOYABLE AND AFFORDABLE** option for families
- ✓ **WEEKLY THEMES**, activities and special events
- ✓ **AGE-APPROPRIATE CURRICULUM** that encourages learning, exploration and fun!
- ✓ **HIGHLY TRAINED** and **ENGAGED** camp staff
- ✓ **OUTDOOR ACTIVITIES**
- ✓ **ON-SITE PRESENTERS!**
- ✓ **FIELD TRIPS AND EVENTS** included in camp fee
- ✓ **A DIFFERENT ADVENTURE** each week
- ✓ **CAMPERS ARE GROUPED BY AGE**



**REGISTER NOW!** Visit [NorthPennYMCA.org/summer-camp](http://NorthPennYMCA.org/summer-camp)

## SHOW OFF YOUR SPIRIT!

### 2025 WEEKLY THEMES

<b>MAY 27-30</b>	Fun & Games (PRE-K ONLY)
<b>JUNE 2-6</b>	Kitchen Capers (PRE-K ONLY)
<b>JUNE 9-13</b>	Dinosaur Days (PRE-K ONLY)
<b>JUNE 16-20</b>	Getting To Know You
<b>JUNE 23-27</b>	Active Body, Active Mind
<b>JUN 30-JUL 3*</b>	Stars & Stripes (4 day camp)
<b>JULY 7-11</b>	Let's Get Creative
<b>JULY 14-18</b>	Indoor Adventures
<b>JULY 21-25</b>	Exploring STEM
<b>JUL 28-AUG 1</b>	Under the Sea
<b>AUGUST 4-8</b>	"If You Build It"
<b>AUGUST 11-15</b>	Around The World
<b>AUGUST 18-22</b>	Y's Got Talent



Friends, fun and sun—all in one! •4•

# COLLEGEVILLE SUMMER CAMP

## AT SKIPPACK ELEMENTARY SCHOOL

» 4081 Heckler Road, Collegeville, PA

Traditional day camp includes activities such as large and small group activities, art & crafts, outdoor games, swimming and more. Our camp goal is to aid campers in building confidence, learning new skills, making friends and having fun. Themes, special activities, field trips, swimming and events make it a different adventure each week. Campers are grouped by age.

**2025 CAMP DATES:** June 16–August 8

**AGE RANGE:** Kindergarten–Grade 5

**SCHEDULE**

- 5 days/week | Monday–Friday
- 3 days/week | Tuesday–Thursday

**TIMES**

- Full day | 9 AM–4 PM
- Extended day | 7 AM–6 PM

**REGISTRATION DEPOSITS**

- \$25 non-refundable deposit due upon registration per week per child.
- This deposit is deducted from the final payment due two weeks before the start of that weekly session.

**QUESTIONS?**

Contact Sangeeta Kharbanda, Branch Executive, 215-723-0574  
[sangeetak@northpennymca.org](mailto:sangeetak@northpennymca.org)

GRADES Sept '25	SCHEDULES	TIME	FIRST CHILD PRICE	ADD CHILD PRICE	MAY 27-30	JUN 2-6	JUN 9-13	JUN 16-20	JUN 23-27	JUN 30 -JUL 3	JUL 7-11	JUL 14-18	JUL 21-25	JUL 28 -AUG 1	AUG 4-8	AUG 11-15	AUG 18-22
<b>COLLEGEVILLE SUMMER CAMP</b>																	
K-5	3 DAY FULL	9 AM-4 PM	\$205	\$195						NO CAMP 7/4							
K-5	5 DAY FULL	9 AM-4 PM	\$280	\$265													
K-5	3 DAY EXTENDED	7 AM-6 PM	\$240	\$225													
K-5	5 DAY EXTENDED	7 AM-6 PM	\$335	\$320													

**NORTH PENN YMCA | Collegeville Summer Camp**  
 4081 Heckler Road, Collegeville, PA | [NorthPennYMCA.org](http://NorthPennYMCA.org)

ELRC is accepted at this location.

# HARLEYSVILLE SUMMER CAMP

## AT INDIAN VALLEY FAMILY YMCA

» 890 Maple Ave. Harleysville, PA

Traditional day camp includes activities such as large and small group activities, art & crafts, outdoor games, swimming and more. Our camp goal is to aid campers in building confidence, learning new skills, making friends and having fun. Themes, special activities, field trips, swimming and events make it a different adventure each week. Campers are grouped by age.

**2025 CAMP DATES:** June 16–August 22

**AGE RANGE:** Grades 2–8

**SCHEDULE**

- 5 days/week | Monday–Friday
- 3 days/week | Tuesday–Thursday

**TIMES**

- Full day | 9 AM–4 PM
- Extended day | 7 AM–6 PM

**REGISTRATION DEPOSITS**

- \$25 non-refundable deposit due upon registration per week per child.
- This deposit is deducted from the final payment due two weeks before the start of that weekly session.

**QUESTIONS?**

Contact Sangeeta Kharbanda, Branch Executive, 215-723-0574  
[sangeetak@northpennymca.org](mailto:sangeetak@northpennymca.org)

GRADES Sept '25	SCHEDULES	TIME	FIRST CHILD PRICE	ADD CHILD PRICE	MAY 27-30	JUN 2-6	JUN 9-13	JUN 16-20	JUN 23-27	JUN 30 - JUL 3 NO CAMP 7/4	JUL 7-11	JUL 14-18	JUL 21-25	JUL 28 - AUG 1	AUG 4-8	AUG 11-15	AUG 18-22
<b>HARLEYSVILLE SUMMER CAMP AT INDIAN VALLEY FAMILY YMCA</b>																	
2-8	3 DAY FULL	9 AM-4 PM	\$205	\$195													
2-8	5 DAY FULL	9 AM-4 PM	\$280	\$265													
2-8	3 DAY EXTENDED	7 AM-6 PM	\$240	\$225													
2-8	5 DAY EXTENDED	7 AM-6 PM	\$335	\$320													

**NORTH PENN YMCA | Harleysville Summer Camp at Indian Valley Family YMCA**

890 Maple Ave, Harleysville, PA | [NorthPennYMCA.org](http://NorthPennYMCA.org)

ELRC is accepted at this location.

# SOUDERTON SUMMER CAMP

## AT E.M.C. ELEMENTARY

» 143 S School Ln, Souderton, PA

Traditional day camp includes activities such as large and small group activities, art & crafts, outdoor games, swimming and more. Our camp goal is to aid campers in building confidence, learning new skills, making friends and having fun. Themes, special activities, field trips, swimming and events make it a different adventure each week. Campers are grouped by age.

**2025 CAMP DATES:** June 16–August 1

**AGE RANGE:** Grades K-5

### SCHEDULE

- 5 days/week | Monday–Friday
- 3 days/week | Tuesday–Thursday

### TIMES

- Full day | 9 AM–4 PM
- Extended day | 7 AM–6 PM

### REGISTRATION DEPOSITS

- \$25 non-refundable deposit due upon registration per week per child.
- This deposit is deducted from the final payment due two weeks before the start of that weekly session.

### QUESTIONS?

Contact Sangeeta Kharbanda, Branch Executive, 215-723-0574 [sangeetak@northpennymca.org](mailto:sangeetak@northpennymca.org)

GRADES Sept '25	SCHEDULES	TIME	FIRST CHILD PRICE	ADD CHILD PRICE	MAY 27-30	JUN 2-6	JUN 9-13	JUN 16-20	JUN 23-27	JUN 30 -JUL 3 NO CAMP 7/4	JUL 7-11	JUL 14-18	JUL 21-25	JUL 28 -AUG 1	AUG 4-8	AUG 11-15	AUG 18-22
<b>SOUDERTON SUMMER CAMP AT E.M.C. ELEMENTARY</b>																	
K-5	3 DAY FULL	9 AM-4 PM	\$205	\$195													
K-5	5 DAY FULL	9 AM-4 PM	\$280	\$265													
K-5	3 DAY EXTENDED	7 AM-6 PM	\$240	\$225													
K-5	5 DAY EXTENDED	7 AM-6 PM	\$335	\$320													

**NORTH PENN YMCA | SOUDERTON SUMMER CAMP AT E.M.C. ELEMENTARY**

143 S School Ln, Souderton, PA 215.368.1601 | [NorthPennYMCA.org](http://NorthPennYMCA.org)

ELRC is accepted at this location.

# HARLEYSVILLE PRE-K & K-1 CAMP

## AT ALUMNI AVE. EARLY CHILDHOOD CENTER

» 311 Alumni Ave. Harleysville, PA

Join us this summer at the Harleysville Early Childhood Center! Children ages 3-5\* will stay on-site at our schoolhouse adjacent to scenic park land, enjoying age-appropriate activities designed to spark creativity and develop new skills. In our K-1 program, young school age campers will engage in fun, experiential learning activities that promote confidence, teamwork and physical wellness. The K-1 program includes field trips, special events, and swimming twice weekly.

### 2025 CAMP DATES:

- Ages 3-5 | May 27-August 15
- Grades K-1 | June 16-August 15

**AGE RANGE:** Ages 3-5 (Pre-K); Kindergarten-1

\* must be potty-trained

### SCHEDULE

- 5 days/week | Monday-Friday
- 3 days/week | Tuesday-Thursday

### TIMES

- Pre-K standard day | 9:15 AM-1:15 PM
- Pre-K extended day | 7 AM-5:30 PM
- K-1 full day | 9 AM-4 PM
- K-1 extended day | 7 AM-6 PM

### REGISTRATION DEPOSITS

- \$25 non-refundable deposit due upon registration per week per child.
- This deposit is deducted from the final payment due two weeks before the start of that weekly session.

### QUESTIONS?

Contact Diane Greve, Branch Director  
[dianeg@northpennymca.org](mailto:dianeg@northpennymca.org)  
 215-256-0767

GRADES Sept '25	SCHEDULES	TIME	FIRST CHILD PRICE	ADD CHILD PRICE	MAY 27-30 NO CAMP 5/26	JUN 2-6	JUN 9-13	JUN 16-20	JUN 23-27	JUN 30 -JUL 3 NO CAMP 7/4	JUL 7-11	JUL 14-18	JUL 21-25	JUL 28 -AUG 1	AUG 4-8	AUG 11-15	AUG 18-22
<b>PRE-K CAMP</b>																	
AGES 3-5	3 DAY STANDARD	9:15 AM -1:15 PM	\$130	\$115													
AGES 3-5	5 DAY STANDARD	9:15 AM -1:15 PM	\$165	\$150													
AGES 3-5	3 DAY EXTENDED	7 AM-5:30 PM	\$200	\$185													
AGES 3-5	5 DAY EXTENDED	7 AM-5:30 PM	\$290	\$275													
<b>K-1 CAMP (includes swimming &amp; field trips)</b>																	
K-1	3 DAY FULL	9 AM-4 PM	\$205	\$195													
K-1	5 DAY FULL	9 AM-4 PM	\$280	\$265													
K-1	3 DAY EXTENDED	7 AM-6 PM	\$240	\$225													
K-1	5 DAY EXTENDED	7 AM-6 PM	\$335	\$320													

**NORTH PENN YMCA | Harleysville Pre-K and K-1 Summer Camp**

311 Alumni Ave., Harleysville, PA | [NorthPennYMCA.org](http://NorthPennYMCA.org)

ELRC is accepted at this location.



# LANSDALE SUMMER CAMP

## AT INGLEWOOD ELEMENTARY

» 1313 Allentown Rd, Lansdale, PA

Traditional day camp includes activities such as large and small group activities, art & crafts, outdoor games, swimming and more. Our camp goal is to aid campers in building confidence, learning new skills, making friends, and having fun. Themes, special activities, field trips, swimming and events make it a different adventure each week. Campers are grouped by age.

**2025 CAMP DATES:** June 23–August 8

**AGE RANGE:** Grades K–8

**SCHEDULE**

- 5 days/week | Monday–Friday
- 3 days/week | Tuesday–Thursday

**TIMES**

- Full day | 9 AM–4 PM
- Extended day | 7 AM–5:30 PM

**REGISTRATION DEPOSITS**

- \$25 non-refundable deposit due upon registration per week per child.
- This deposit is deducted from the final payment due two weeks before the start of that weekly session.

**QUESTIONS?**

Contact our camp team at [camp@northpennymca.org](mailto:camp@northpennymca.org)

GRADES Sept '25	SCHEDULES	TIME	FIRST CHILD PRICE	ADD CHILD PRICE	MAY 27-30	JUN 2-6	JUN 9-13	JUN 16-20	JUN 23-27	JUN 30 -JUL 3 NO CAMP 7/4	JUL 7-11	JUL 14-18	JUL 21-25	JUL 28 -AUG 1	AUG 4-8	AUG 11-15	AUG 18-22
<b>LANSDALE SUMMER CAMP AT INGLEWOOD ELEMENTARY</b>																	
K-8	3 DAY FULL	9 AM-4 PM	\$205	\$195													
K-8	5 DAY FULL	9 AM-4 PM	\$280	\$265													
K-8	3 DAY EXTENDED	7 AM-5:30 PM	\$240	\$225													
K-8	5 DAY EXTENDED	7 AM-5:30 PM	\$335	\$320													

**NORTH PENN YMCA | Lansdale Summer Camp at Inglewood Elementary**  
1313 Allentown Rd, Lansdale, PA | [NorthPennYMCA.org](http://NorthPennYMCA.org)

# LANSDALE SUMMER CAMP

## AT LANSDALE CATHOLIC

» 700 Lansdale Ave. Lansdale, PA

Camp at Lansdale Catholic provides youth the opportunity to have fun this summer with recreational activities that embrace imagination and interest. Campers will engage in activities such as crafts, swimming, and traditional camp games and sports. Our activities promote camp spirit, socialization, physical and emotional wellness and help build self-esteem.

**2025 CAMP DATES:** June 23–August 8

**AGE RANGE:** Grades K–8

**SCHEDULE**

- 5 days/week | Monday–Friday
- 3 days/week | Tuesday–Thursday

**TIMES**

- Full day | 9 AM–4 PM
- Extended day | 7 AM–5:30 PM

**REGISTRATION DEPOSITS**

- \$25 non-refundable deposit due upon registration per week per child.
- This deposit is deducted from the final payment due two weeks before the start of that weekly session.

**QUESTIONS?**

Contact our camp team at [camp@northpennymca.org](mailto:camp@northpennymca.org)

GRADES Sept '25	SCHEDULES	TIME	FIRST CHILD PRICE	ADD CHILD PRICE	MAY 27-30	JUN 2-6	JUN 9-13	JUN 16-20	JUN 23-27	JUN 30 -JUL 3	JUL 7-11	JUL 14-18	JUL 21-25	JUL 28 -AUG 1	AUG 4-8	AUG 11-15	AUG 18-22
<b>LANSDALE SUMMER CAMP AT LANSDALE CATHOLIC</b>																	
K-8	3 DAY FULL	9 AM-4 PM	\$205	\$195													
K-8	5 DAY FULL	9 AM-4 PM	\$280	\$265													
K-8	3 DAY EXTENDED	7 AM-5:30 PM	\$240	\$225													
K-8	5 DAY EXTENDED	7 AM-5:30 PM	\$335	\$320													

**NORTH PENN YMCA | Lansdale Summer Camp at Lansdale Catholic**  
700 Lansdale Ave., Lansdale, PA | [NorthPennYMCA.org](http://NorthPennYMCA.org)

# LANSDALE SUMMER CAMP

## AT LANSDALE AREA FAMILY YMCA

» 608 E Main St, Lansdale, PA

Traditional day camp includes activities such as large and small group activities, art & crafts, outdoor games, swimming and more. Our camp goal is to aid campers in building confidence, learning new skills, making friends and having fun. Themes, special activities, field trips, swimming and events.

**2025 CAMP DATES:** June 23–August 22

**AGE RANGE:** Grades 1–8

**SCHEDULE**

- 5 days/week | Monday–Friday
- 3 days/week | Tuesday–Thursday

**TIMES**

- Full day | 9 AM–4 PM
- Extended day | 7 AM–5:30 PM

**REGISTRATION DEPOSITS**

- \$25 non-refundable deposit due upon registration per week per child.
- This deposit is deducted from the final payment due two weeks before the start of that weekly session.

**QUESTIONS?**

Contact our camp team at [camp@northpennymca.org](mailto:camp@northpennymca.org)

GRADES Sept '25	SCHEDULES	TIME	FIRST CHILD PRICE	ADD CHILD PRICE	MAY 27-30	JUN 2-6	JUN 9-13	JUN 16-20	JUN 23-27	JUN 30 -JUL 3	JUL 7-11	JUL 14-18	JUL 21-25	JUL 28 -AUG 1	AUG 4-8	AUG 11-15	AUG 18-22
<b>LANSDALE SUMMER CAMP AT LANSDALE FAMILY YMCA</b>																	
1-8	3 DAY FULL	9 AM-4 PM	\$205	\$195						NO CAMP 7/4							
1-8	5 DAY FULL	9 AM-4 PM	\$280	\$265													
1-8	3 DAY EXTENDED	7 AM-5:30 PM	\$240	\$225													
1-8	5 DAY EXTENDED	7 AM-5:30 PM	\$335	\$320													

**NORTH PENN YMCA | Lansdale Summer Camp at Lansdale Family YMCA**  
608 E. Main St., Lansdale, PA | 215.368.1601 | [NorthPennYMCA.org](http://NorthPennYMCA.org)

ELRC is accepted at this location.

# LANSDALE SUMMER CAMP

## Y GLOBAL CAMP AT LANSDALE COMMUNITY CENTER

» 229 W. 5th Street, Lansdale, PA

Y Global Camp at Lansdale Community Center provides youth the opportunity to have fun this summer, learning about different countries around our globe. Campers will engage in activities from other countries such as China, Germany, Hungary as an example. They will learn about the culture, make and taste different foods and design crafts. Our activities promote camp spirit, socialization, physical and emotional wellness and help build self-esteem.

**2025 CAMP DATES:** July 1 – July 31

**AGE RANGE:** Grades K-6

**SCHEDULE**

- 3 days/week | Tuesday-Thursday

**TIMES**

- Full day | 9 AM-4 PM
- Extended day | 7 AM-5:30 PM

**REGISTRATION DEPOSITS**

- \$25 non-refundable deposit due upon registration per week per child.
- This deposit is deducted from the final payment due two weeks before the start of that weekly session.

**QUESTIONS?**

Contact our camp team at [camp@northpennymca.org](mailto:camp@northpennymca.org)

GRADES Sept '25	SCHEDULES	TIME	FIRST CHILD PRICE	ADD CHILD PRICE	MAY 27-30	JUN 2-6	JUN 9-13	JUN 16-20	JUN 23-27	JUN 30 -JUL 3 NO CAMP 7/4	JUL 7-11	JUL 14-18	JUL 21-25	JUL 28 -AUG 1	AUG 4-8	AUG 11-15	AUG 18-22
<b>LANSDALE SUMMER CAMP AT LANSDALE COMMUNITY CENTER</b>																	
K-6	3 DAY FULL	9 AM-4 PM	\$205	\$194													
K-6	3 DAY EXTENDED	7 AM-5:30 PM	\$236	\$226													

**NORTH PENN YMCA | Lansdale Summer Camp at Lansdale Community Center**  
229 W. 5th Street, Lansdale, PA | [NorthPennYMCA.org](http://NorthPennYMCA.org)

# HATFIELD SUMMER CAMP

## AT SCHOOL ROAD PARK

» 1619 School Rd, Hatfield, PA

Camp in Hatfield Township provides youth with recreational activities that embrace imagination and interest. Campers will have the opportunity to engage in crafts, performances and group projects. In addition, campers will participate in traditional summer camp activities in the great outdoors. These include sports, games, team building, science and theme-related special events. Our activities promote camp spirit, socialization, physical and emotional wellness and help build self-esteem.

**2025 CAMP DATES:** June 23–August 22

**AGE RANGE:** Grades K–6

**SCHEDULE**

- 5 days/week | Monday–Friday
- 3 days/week | Tuesday–Thursday

**TIME**

- 8:00 AM – 5:00 PM

**REGISTRATION DEPOSITS**

- \$25 non-refundable deposit due upon registration per week per child.
- This deposit is deducted from the final payment due two weeks before the start of that weekly session.

**QUESTIONS?**

Contact our camp team at [camp@northpennymca.org](mailto:camp@northpennymca.org)

GRADES Sept '25	SCHEDULES	TIME	FIRST CHILD PRICE	ADD CHILD PRICE	MAY 27-30	JUN 2-6	JUN 9-13	JUN 16-20	JUN 23-27	JUN 30 -JUL 3	JUL 7-11	JUL 14-18	JUL 21-25	JUL 28 -AUG 1	AUG 4-8	AUG 11-15	AUG 18-22
<b>HATFIELD SUMMER CAMP AT SCHOOL ROAD PARK</b>																	
K-6	RESIDENT 3 DAY	8 AM-5 PM	\$148	\$138													
K-6	RESIDENT 5 DAY	8 AM-5 PM	\$214	\$204													
K-6	NON-RESIDENT 3 DAY	8 AM-5 PM	\$181	\$171													
K-6	NON-RESIDENT 5 DAY	8 AM-5 PM	\$265	\$255													

**NORTH PENN YMCA | Hatfield Summer Camp at School Road Park**  
1619 School Rd, Hatfield, PA | [NorthPennYMCA.org](http://NorthPennYMCA.org)

# TOWAMENCIN SUMMER CAMP AT FISCHERS PARK

» 2235 Bustard Rd, Towamencin, PA

Camp in Towamencin Township provides youth with recreational activities that embrace imagination and interest. Campers will have the opportunity to engage in crafts, performances and group projects. In addition, campers will participate in traditional summer camp activities in the great outdoors. These include sports, games, team building, science and theme-related special events. Our activities promote camp spirit, socialization, physical and emotional wellness and help build self-esteem.

**2025 CAMP DATES:** June 23–August 22

**AGE RANGE:** Grades K–8

**SCHEDULE**

- 5 days/week | Monday–Friday
- 3 days/week | Tuesday–Thursday

**TIME**

- 8:00 AM – 5:00 PM

**REGISTRATION DEPOSITS**

- \$25 non-refundable deposit due upon registration per week per child.
- This deposit is deducted from the final payment due two weeks before the start of that weekly session.

**QUESTIONS?**

Contact our camp team at [camp@northpennymca.org](mailto:camp@northpennymca.org)

GRADES Sept '25	SCHEDULES	TIME	FIRST CHILD PRICE	ADD CHILD PRICE	MAY 27-30	JUN 2-6	JUN 9-13	JUN 16-20	JUN 23-27	JUN 30 -JUL 3 <small>NO CAMP 7/4</small>	JUL 7-11	JUL 14-18	JUL 21-25	JUL 28 -AUG 1	AUG 4-8	AUG 11-15	AUG 18-22
<b>TOWAMENCIN SUMMER CAMP AT FISCHERS PARK</b>																	
K-8	RESIDENT 3 DAY	8 AM- 5 PM	\$148	\$138													
K-8	RESIDENT 5 DAY	8 AM- 5 PM	\$214	\$204													
K-8	NON- RESIDENT 3 DAY	8 AM- 5 PM	\$181	\$171													
K-8	NON- RESIDENT 5 DAY	8 AM- 5 PM	\$265	\$255													

**NORTH PENN YMCA | Towamencin Summer Camp at Fischers Park**  
2235 Bustard Rd, Towamencin, PA | [NorthPennYMCA.org](http://NorthPennYMCA.org)

# FIELD TRIP INFORMATION

Each week our camps will go on a field trip or attend a special event at their camp location. On field trip days, ALL campers must arrive at their camp location by designated time which will be communicated to families prior to the trip. Campers must wear sneakers, have packed lunch, sunscreen and any other essential items. Detailed information for each trip will be shared by camp staff prior to each trip.

CAMP WEEK	INDIAN VALLEY YMCA E.M.C. ELEMENTARY SKIPPACK ELEMENTARY	HARLEYSVILLE ALUMNI AVE. K-1 CAMP ONLY	LANSDALE YMCA FISCHER'S PARK SCHOOL RD. PARK	LANSDALE CATHOLIC INGLEWOOD
June 16-20	Outdoor Picnic	Storytelling and Picnic	N/A	N/A
June 23-27	Freddy Hill Golf	Bowling	Olympic Style Games	Olympic Style Games
June 30- July 3	Fire/EMT Visits	4th of July Celebration	Fire/EMT Visits	Fire/EMT Visits
July 7-11	Crayola Factory	Art Show	Arts and Crafts	Arts and Crafts
July 14-18	Urban Air	Historical Society Visit	Water Tower Cinema	Water Tower Cinema
July 21-25	Mad Science	Elmwood Park Zoo	Magic by Stuart	Magic by Stuart
July 28- August 1	Mauch Chunk Lake	Perkiomen Creek Watershed	Elmwood Park Zoo	Elmwood Park Zoo
August 4-8	Lego Build Competition	Legoland	Arts and Crafts	Arts and Crafts
August 11-15	To Be Determined	Musical Production	Freddy Hill Golf	N/A
August 18-22	Awards/Lunch party	N/A	Talent Show	N/A

## REGISTER

- All campers must have at least a North Penn YMCA Youth Program Membership (\$50/year).
- Camp locations are based upon the grade the camper is going into as of Sept 2025.
- Weekly tuition payments are due 2 weeks prior to the session start date. See the payment schedule in our Summer Camp Parent Handbook. All checks must be made payable to the North Penn YMCA.
- Registration requires a non-refundable deposit of \$25 per week to secure your child's spot in our camp.
- Due to size limitations at our camp locations, all registrations are on a first come, first serve basis. Please note, all camp locations must have 20 campers minimum enrolled for that location to open for the 2025 season.
- Camp registration packets are available at the Membership Desks or can be printed from our website. Completed summer camp registration packets for all locations can be dropped off at Indian Valley Family YMCA, Harleysville Early Childhood Center or Lansdale Area Family YMCA. Camp registration packets can also be filled out electronically and emailed to the camp directors.

## CAMP POLICY AND INFO

All parents are required to read our Summer Camp Parent Handbook, which outlines our camp policies, procedures, general rules, trip information, payment schedule and more! Our Parent Handbook is available for download on our website. Camp themes, specials, trips and daily schedule subject to change.

### WHAT FAMILIES ARE SAYING...

"The Y Summer Camp at the Harleysville Early Childhood Center has been such a positive experience for my daughter. She was excited to go every morning, and sad to leave in the afternoon to come home. It felt like such a weight lifted off my shoulders to know that she was well cared for, enjoying herself, and still getting to learn and experience new things. We're so lucky to have found such a great program. My daughter was so happy there and is excited to go back!"

"My daughter absolutely loved the Summer Camp at the Harleysville YMCA Early Childhood Center. She attended the entire summer last year and loved all the fun activities and trips they had planned each week. She also made so many new friends and adored all of the caring counselors and staff. She cannot wait to go back again this summer!"